

GW48-252 Outdoor HV Disconnect Switch

Summary

GW48-252 outdoor AC high voltage disconnect switch is used to open and close high voltage circuit in rated voltage 252kV, 50Hz power system.

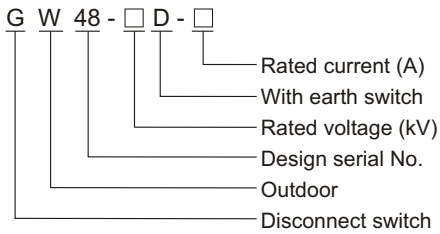
It accords with the standards of IEC 62271-102 and GB1985-2004: AC high voltage disconnect switch and earth switch.



Ambient condition

1. Altitude: ≤2000m;
2. Ambient temperature: -40°C~+40°C;
3. Wind speed: ≤34m/s;
4. Earthquake intensity: ≤8degree;
5. Ice coverage thickness: ≤10mm;
6. Pollution degree: I, II, III, IV;
7. Applicable occasions should free from inflammables and frequent severe vibration.

Model



Product feature

GW48-252 disconnect switch have features of compact, well sealed, less maintenance in 252kV substation, 90° between incoming and outgoing is a perfect disconnect switch. The material of connection terminal is aluminum alloy, main blade is CJ6A motor operating mechanism, earth blade is CSA manual operating mechanism.

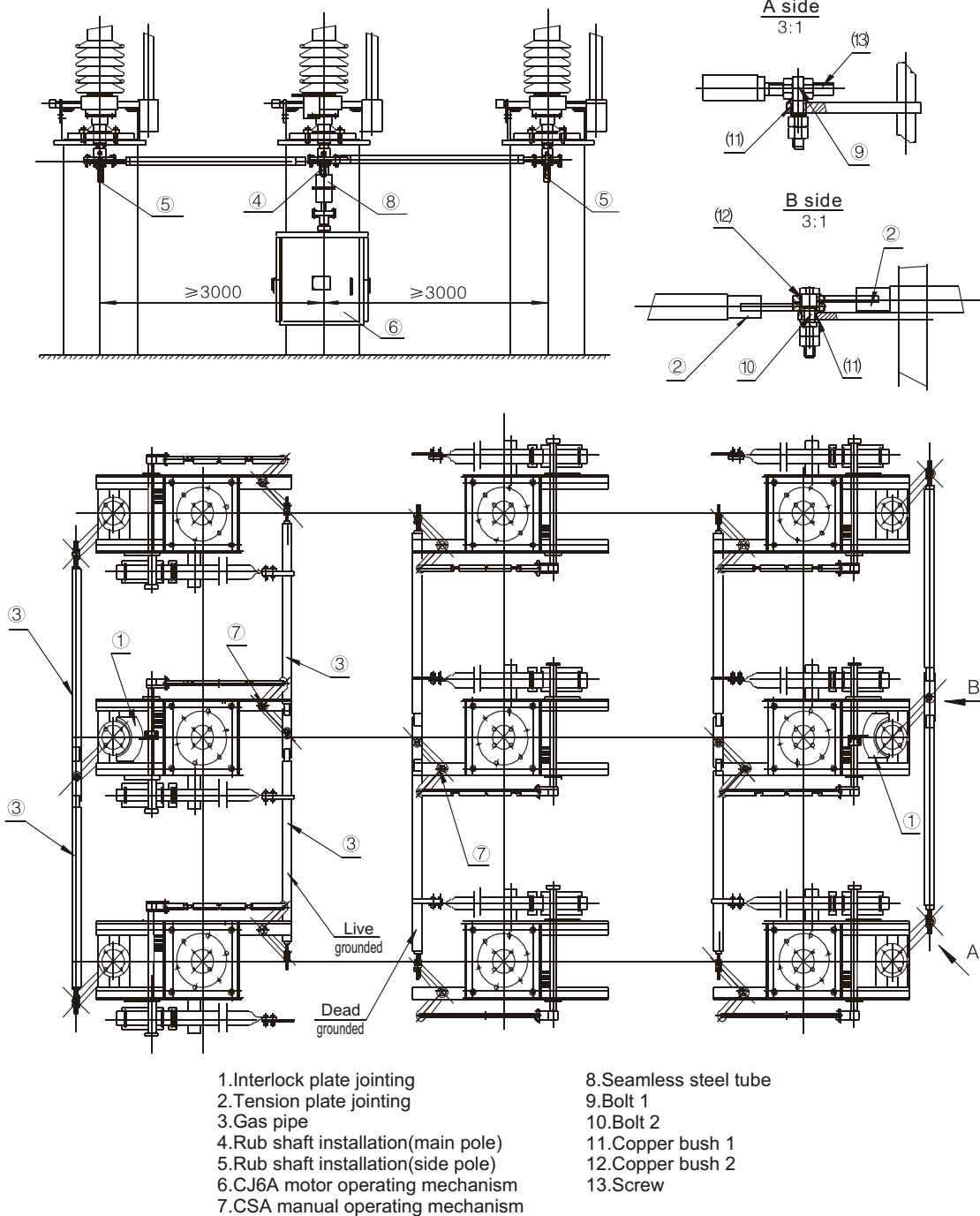


GW48 is for horizontal disconnect switch

No.	Item	Unit	Data
1	Rated voltage	kV	252
2	Rated current	A	2000, 2500, 3150, 4000
3	Rated frequency	Hz	50
4	Rated short-time withstand current (with earth switch)	kA	40, 50, 63
5	Rated peak withstand current (with earth switch)	kA	100, 125, 160
6	Rated short-time PF, withstand voltage (1min)	across open contacts	460+145
		phase to phase, to earth	460
7	Rated lightning impulse withstand voltage(1.2/50 μs)	Across open contacts	1050+200
		phase to phase, to earth	1050
8	Rated static mechanical load for terminal	Horizontal longitudinal Ftha	2000
		Horizontal transverse Fthb	1500
		Vertical Ftv	1250

No.	Item	Unit	Data
9	Electromagnetic coupling	Rated inductive current	A
		Rated inductive voltage	kV
	Electrostatic coupling	Rated inductive current	A
		Rated inductive voltage	kV

CSA manual operating mechanism



GW48-252 Disconnect switch of three pole installation drawing